

QUANTITATIVE TARGETED METABOLOMIC PANELS FOR EXPOSOME, ENVIRONMENT, NUTRITIONAL, GUT MICROBIOTA & CLINICAL BIOMARKER ANALYSIS

Large-Scale Multianalyte Exposome and Clinical Biomarkers Panels for Human Exposome Metabolome Quantification

What are metabolomics' Panels?

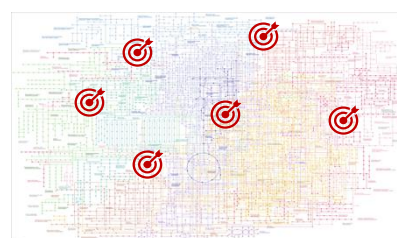
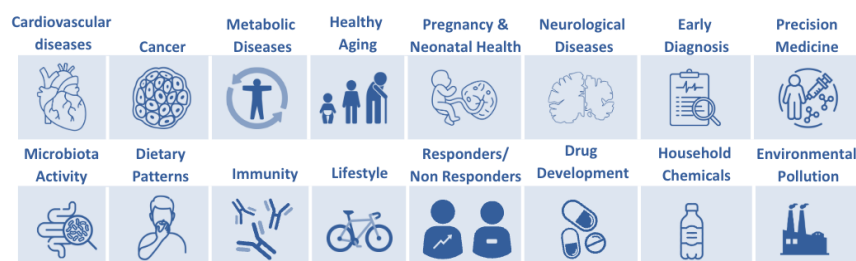
The group has developed two panels that enables the absolute quantification of over 1,800 metabolites, **making it the most comprehensive targeted metabolomics study to date.**

What can offer?

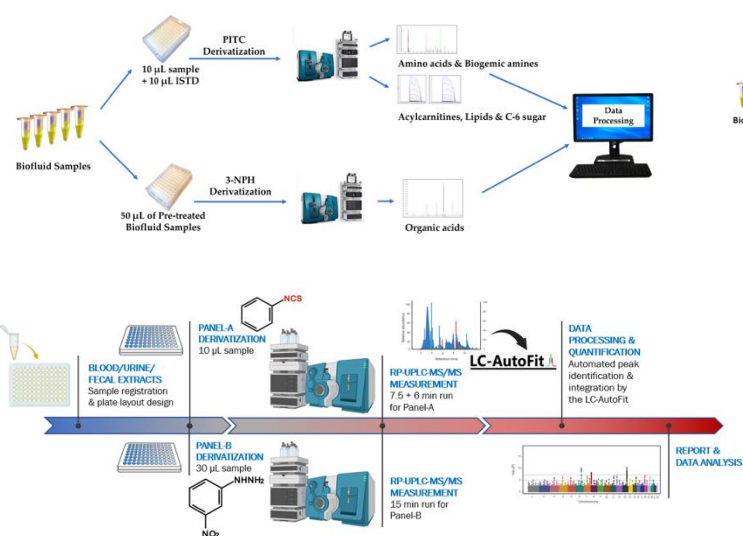
MEGA and EXPOSOME help to address specific research questions in precision medicine and nutrition, and exposome studies by using minimal volumes of biospecimen samples (less than 100 μ L).

DESCRIPTION: MEGA and EXPOSOME PANELS have already been successfully applied in **large-scale clinical, nutritional, gut microbiota, and environmental metabolomics research and innovation.**

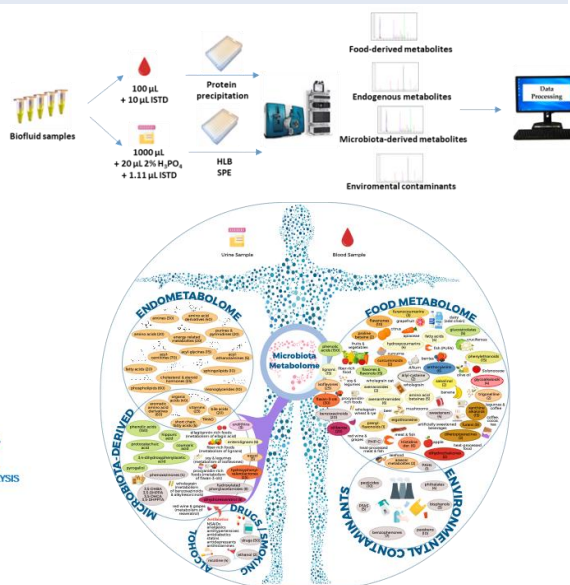
BIOMARKERS ASSOCIATED WITH:



MEGA PANEL (CLINICAL BIOMARKERS)*



EXPOSOME PANEL



*Developed jointly with the University of Alberta and TMIC Wishart Node (doi: [10.3390/metabo14110622](https://doi.org/10.3390/metabo14110622)).

Awarded by the American Chemistry Society, best paper of the year 2021 (doi: [10.1021/acs.analchem.0c02008](https://doi.org/10.1021/acs.analchem.0c02008)).

Services

The Biomarkers, Exposome, and Nutritional and Food Metabolomics Research Group is your research partner. We analyse your biospecimen samples (plasma, serum, stool, urine, Cerebrospinal fluid, etc.) providing quantitative data (μ M).

Contact details

**Biomarkers, Exposome & Nutrition
and Food Metabolomics research
group**

grc.nutrimetabolomic@ub.edu
www.ub.edu/nutrimetabolomics